

# Retail Acquisition Parameters

With over 75 transactions completed, Next Realty is actively pursuing additional opportunities. We are currently deploying **Next Realty Fund X, LP** a fully discretionary investment fund.

**Markets:** Properties throughout the United States with emphasis on our core markets - Chicago, Cincinnati, Indianapolis, Milwaukee/Madison, Minneapolis/St. Paul, Nashville, & Washington, D.C.

**Value:** \$5 million to \$50 million

**Type:** Multi-Tenant Retail Properties and Single Tenant Net-Leased Buildings

**Characteristics:** Stabilized or Value-Add



Kings Automall  
Cincinnati, OH



Essex Square  
Madison, WI



Potomac Greens  
Alexandria, VA



Wilmette Commons  
Wilmette, IL

## We Bring:

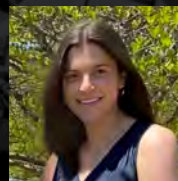
- Discretionary capital, ready to be deployed
- Expedited due diligence timing
- All cash offers with no financing contingency
- Ability to close quickly

**Additional Opportunities:** As part of our Next Equity Program, we consider joint venture partnerships, on a select basis.

Contact Us Today to present your property and take advantage of our Nextpertise®



**Eteri Zaslavsky**  
847.881.2018  
ezaslavsky@nextrealty.com



**Shannon Powers**  
847.881.2033  
spowers@nextrealty.com

Next Realty is a real estate investment and operating company with over 20 years of success in the industry. We have closed nearly \$635 million in acquisitions across the country. With over 75 transactions completed, Next Realty continues to manage a diversified portfolio with assets that include retail, industrial, multifamily, parking, adaptive reuse and medtail holdings.